



What's New in Run Manager 1.7? May 2016

Run Manager 1.7 is the latest general release of CERC's run management tool. Run Manager 1.7 contains a number of fixes and improvements, most notably:

- The ability to collect output from finished runs using the “drag and drop” buttons in the **Run Status** screen.
- Now built on version 4.5.2 of the .Net Framework.
- Additional version labelling of auxiliary files to support future upgrades.
- Prevention of conflicting model names in the **Models** screen.

This document contains details of the changes implemented since the previous version of Run Manager (version 1.5, September 2014). Also contained in this document are instructions for upgrading from previous versions of Run Manager.

IMPORTANT NOTE FOR UPGRADING RUN MANAGER

You must create a new central repository for Run Manager 1.7. If you want to recreate the models from your old central repository, their files can be found in its *.Models* directory. Further instructions can be found below.

In this release

This version of Run Manager 1.7 includes an updated executable and User Guide. The Run Manager User Guide can be found in the *'Documents'* sub-directory of the Run Manager 1.7 install directory. This version of Run Manager requires a new central repository.

Installation

Before installing Run Manager 1.7

Log on to your computer as Administrator, and uninstall any previous version of Run Manager by selecting **Programs and features** from the Windows Control Panel.

Installing Run Manager 1.7

If you have not already done so, log on to your computer as Administrator.

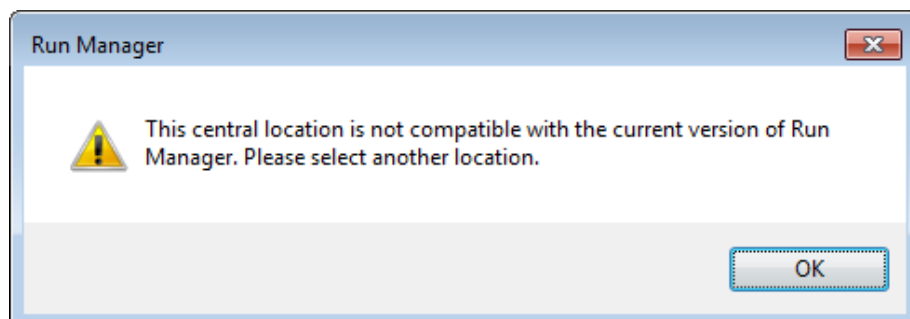
Run Manager will either have been supplied by download link or on CD. Follow the appropriate instructions:

- **Download:** Extract the downloaded *.zip* file to a local directory. In Explorer, browse to this directory and double-click on the file '*setup.exe*'.
- **CD:** Insert the Run Manager installation CD and the install program should start automatically. If it does not, browse to locate the CD in Explorer and double-click on the file '*setup.exe*'.


Follow the instructions on the screen. Further details are given in Section 2.2 of the User Guide, a copy of which can be found in the Run Manager installation files in *.pdf* format.

Upgrading your central repository

1. Run Manager will automatically detect whether your local settings and central repository are out of date, and will display the **Local options** screen when it starts for the first time after installation.
2. Follow the instructions in **Section 2.4** of the Run Manager user guide to set up a new central repository. If you attempt to connect to an old central repository you will get the following warning:



New Features and changes

1. The ability to collect output from finished runs using the “drag and drop” buttons in the **Run Status** screen. Runs are collected by dragging the  button into your target directory.
2. Now built on version 4.5.2 of the .Net Framework. Run Manager no longer requires .Net Framework 3.5.1, which may have been installed with Run Manager 1.4-1.5.
3. Additional version labelling of auxiliary files to support automatic upgrades to central repositories in the future.
4. Prevention of conflicting model names in the **Models** screen. Model names are no longer case-sensitive.