



What's New in Run Manager 1.8? July 2017

Run Manager 1.8 is the latest general release of CERC's run management tool. Run Manager 1.8 contains a number of fixes and improvements, most notably:

- Support for the latest generation of ADMS-Urban family, ADMS, and FLOWSTAR-Energy models.
- Support for large output files
- Improved run distribution.
- Improved model definition options including support for model definition templates – provided with future model releases.

This document contains details of the changes implemented since the previous version of Run Manager (version 1.7, May 2016). Also contained in this document are instructions for upgrading from previous versions of Run Manager.

IMPORTANT NOTE FOR UPGRADING RUN MANAGER

You must create a new central repository for Run Manager 1.8. If you want to recreate the models from your old central repository, their files can be found in its *./Models* directory. Further instructions can be found below.

In this release

This version of Run Manager 1.8 includes an updated executable and User Guide. The Run Manager User Guide can be found in the '*Documents*' sub-directory of the Run Manager 1.8 install directory. This version of Run Manager requires a new central repository.

Installation

Before installing Run Manager 1.8

Log on to your computer as Administrator, and uninstall any previous version of Run Manager by selecting **Programs and features** from the Windows Control Panel.

Installing Run Manager 1.8

If you have not already done so, log on to your computer as Administrator.

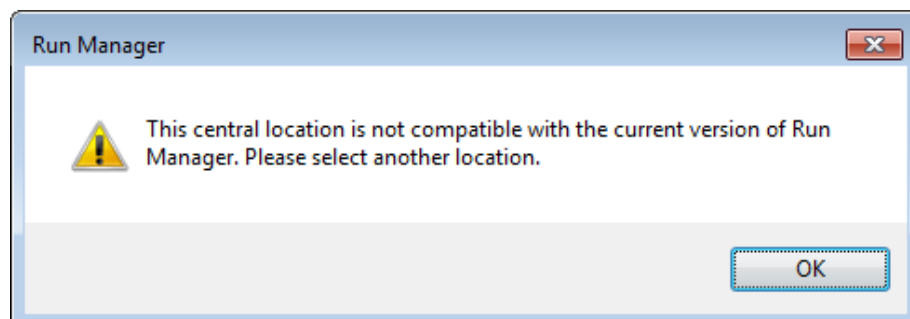
Run Manager will either have been supplied by download link or on CD. Follow the appropriate instructions:

- **Download:** Extract the downloaded *.zip* file to a local directory. In Explorer, browse to this directory and double-click on the file '*setup.exe*'.
- **CD:** Insert the Run Manager installation CD and the install program should start automatically. If it does not, browse to locate the CD in Explorer and double-click on the file '*setup.exe*'.

Follow the instructions on the screen. Further details are given in Section 2.2 of the User Guide, a copy of which can be found in the Run Manager installation files in *.pdf* format.

Upgrading your central repository

1. Run Manager will automatically detect whether your local settings and central repository are out of date, and will display the **Local options** screen when it starts for the first time after installation.
2. Follow the instructions in **Section 2.4** of the Run Manager user guide to set up a new central repository. If you attempt to connect to an old central repository you will get the following warning:



New features and changes

1. Run Manager is now compatible with more CERC software products including FLOWSTAR-Energy, ADMS-Puff and GASTAR.
2. Support for the latest generation of ADMS & ADMS-Urban families of models. The new Run Manager now allows configuration of the “runs machines” on a per-model basis. This gives you the flexibility to determine the maximum number of simultaneous runs of a particular model on a runs machine should you wish to do so.
3. Support for large output files. We have added support for Zip64 format zip files, which fixes an issue that prevented output files larger than 4GB from being retrieved.
4. Improved run distribution. Model runs are more evenly distributed between active “runs machines” in an execution group, which can improve run times.
5. Improved handling of disk space limitations. If the central repository runs out of disk space, the output files will be stored locally on the machine that performed the run. However, the output from the run can be retrieved in the same way via the Run Manager interface. This requires some additional configuration, which is explained in **Section 2.4** of the user guide.
6. Support for model definition templates. This new feature will provide the required model files, input file type, and default command line arguments to configure a model definition in Run Manager by a simple drag-drop process. These template files (*.rmd) will be provided with future model releases.
7. Improved model options.
 - Drag-drop support for model executables and the new *.rmd template files
 - Default model per (input) file type, which determines the default model choice when initialising runs
8. Streamlined settings window for model execution and output file collection.