

Using the ADMS Mapper

Mark Attree, CERC

ADMS-Urban and ADMS-Roads User Group Meeting
14th November 2013
Newcastle

CERC

Cambridge Environmental Research Consultants
Environmental Software and Services

Contents

- . Introduction
 - Key applications
- . Using the ADMS Mapper
 - Viewing model input
 - Checking model input
 - Editing model input
 - Visualising results
- . Other features
 - 3D visualisation
 - Importing and exporting layers

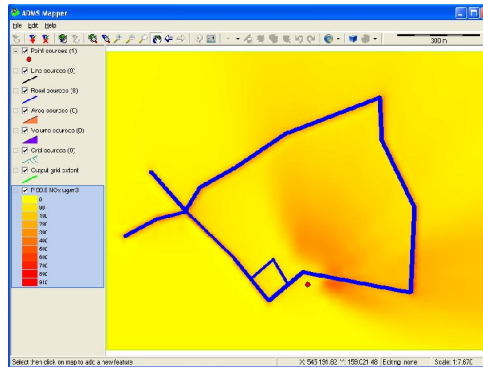
CERC

ADMS-Urban and ADMS-Roads User Group Meeting 2013

Introduction

The ADMS Mapper

- **New utility** included with the new release of ADMS-Urban, ADMS-Roads, and ADMS-Airport
- **GIS** tool that connects to the model interface
- Allows **graphical visualisation** of model input and output



Does not require any third party software

CERC

ADMS-Urban and ADMS-Roads User Group Meeting 2013

Introduction

Key applications



- **Visualising** model input
- **Checking** model input
- **Editing** model input
 - Edit or add sources graphically
- **Contour plotting**
 - Without third party software

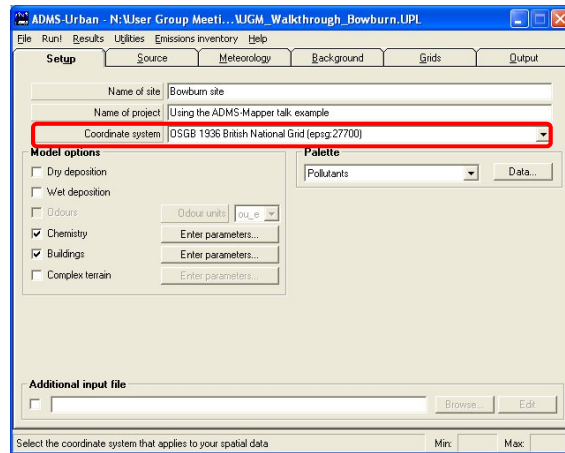
CERC

ADMS-Urban and ADMS-Roads User Group Meeting 2013

Viewing model input

Loading the ADMS Mapper

- Load your *.upl* in the model interface
- Select the correct coordinate system for your run
 - This is used by the ADMS Mapper



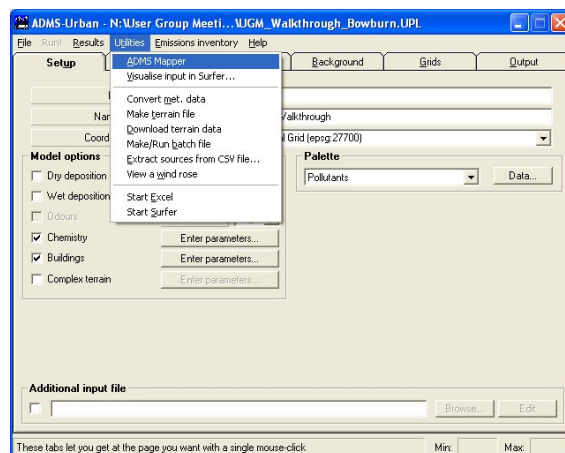
CERC

ADMS-Urban and ADMS-Roads User Group Meeting 2013

Viewing model input

Loading the ADMS Mapper

- Load your *.upl* in the model interface
- Select the correct coordinate system for your run
 - This is used by the ADMS Mapper
- The **ADMS Mapper** is a new option available from the **Utilities** menu



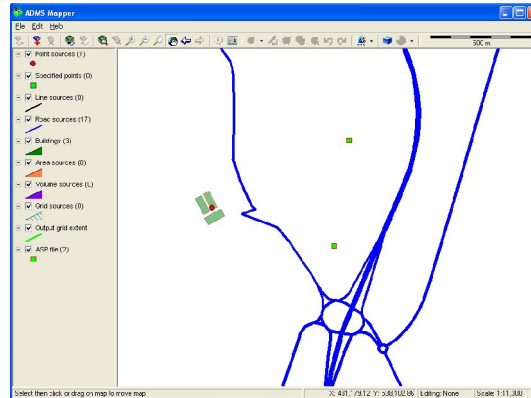
CERC

ADMS-Urban and ADMS-Roads User Group Meeting 2013

Viewing model input

The interface

- All model input is loaded from the open *.upl*
 - In coordinate system specified in the main interface
- Each source type is added to the map as a separate layer
- Also loads
 - Buildings
 - Gridded output points
 - Specified points (including *.asp*)



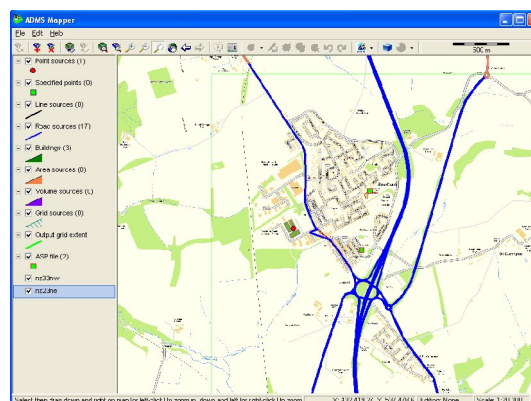
CERC

ADMS-Urban and ADMS-Roads User Group Meeting 2013

Viewing model input

Basic GIS tools

- Basic GIS features:
 - Measure distances
 - Change order of layers
 - Refresh source layers
- Add other files
 - **Rasters** (including georeferenced files)
 - **ESRI Shapefiles**
 - **Surfer Grid** files
 - A range of other formats



CERC

ADMS-Urban and ADMS-Roads User Group Meeting 2013

Checking model input

Viewing source information

Point sources	
UID	1
Name	Bowburn South
Geometry	Point
Elevation	20
Diameter	1.6
X	430328
Y	537921
MainBuilding	(Main)
Temperature	40
Exit velocity	15
NOx (g/s)	0.105
VOC (g/s)	2.5
PM2.5 (g/s)	0.00525
GIS_AREA	0
GIS_LENGTH	0

- Viewing **information** on model inputs
 - Useful for checking input before setting off a run
 - Loads emissions and traffic information for roads
 - Useful for identifying model inputs (e.g. NAEI point sources)

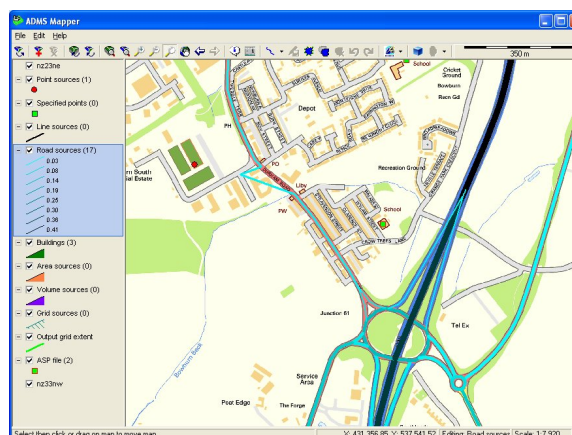
CERC

ADMS-Urban and ADMS-Roads User Group Meeting 2013

Checking model input

Modifying the appearance of layers (1)

- Modify feature colour, line thickness, symbols
- Control the display of layers using data parameters
 - User input for ADMS sources and receptors
 - Fields for ESRI shapefiles



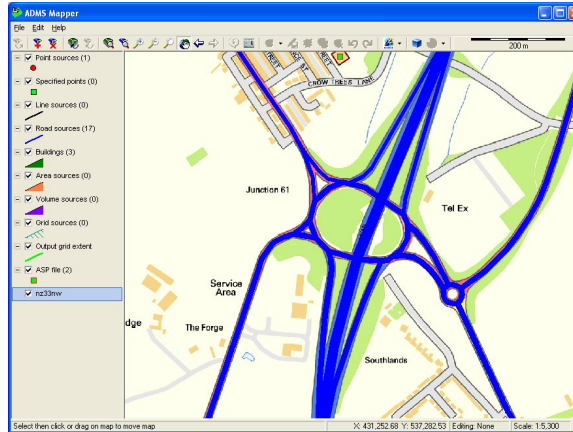
CERC

ADMS-Urban and ADMS-Roads User Group Meeting 2013

Checking model input

Modifying the appearance of layers (2)

- Much of the model input is scaled by default
 - e.g. road widths are scaled to the width input in the interface
- Check parameters at a glance



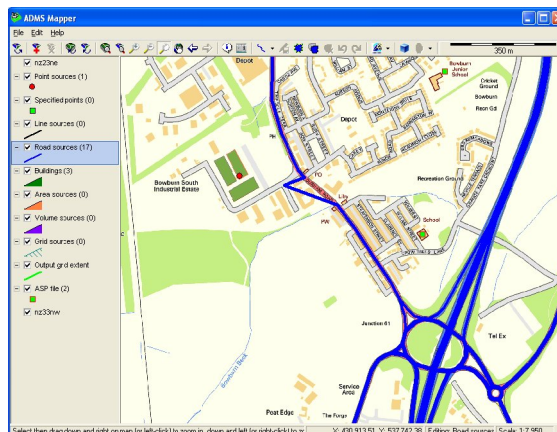
CERC

ADMS-Urban and ADMS-Roads User Group Meeting 2013

Editing model input

Editing sources

- One of the vertices in this road is wrong!
- The ADMS Mapper can
 - Edit vertices
 - Shift features
 - Delete features
- Current restrictions
 - Airport sources
 - Grid sources
 - .asp files

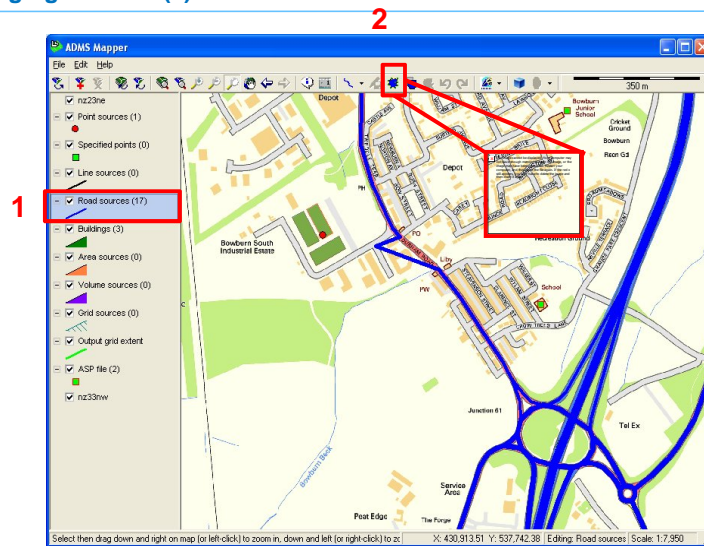


CERC

ADMS-Urban and ADMS-Roads User Group Meeting 2013

Editing model input

Changing vertices (1)

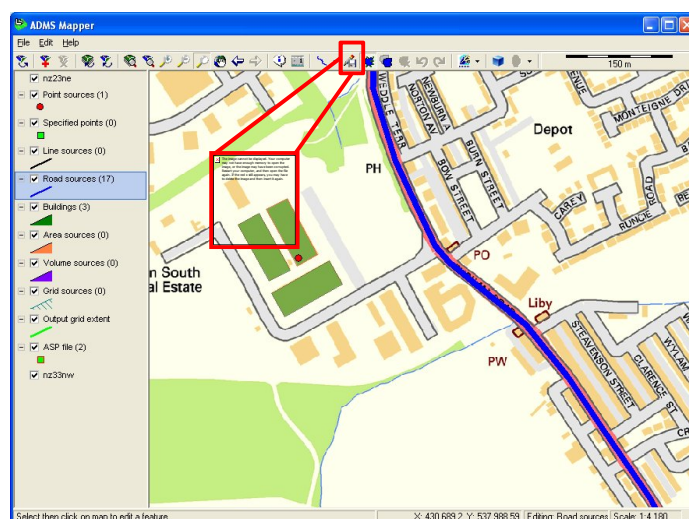


CERC

ADMS-Urban and ADMS-Roads User Group Meeting 2013

Editing model input

Changing vertices (2)

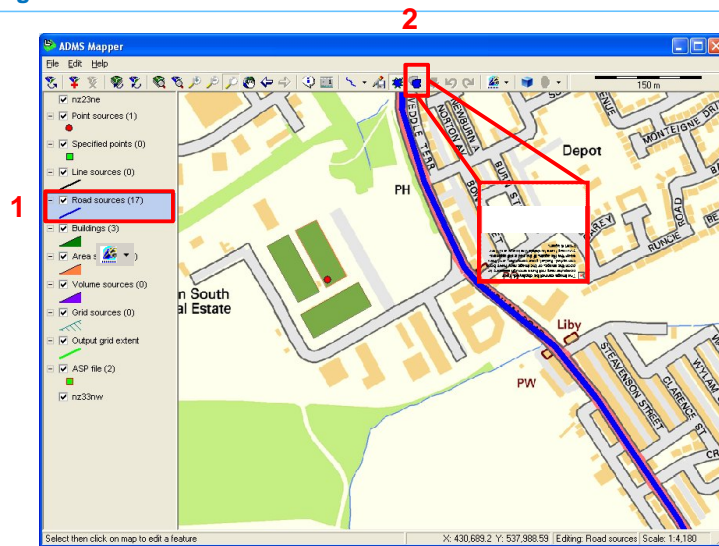


CERC

ADMS-Urban and ADMS-Roads User Group Meeting 2013

Editing model input

Shifting features



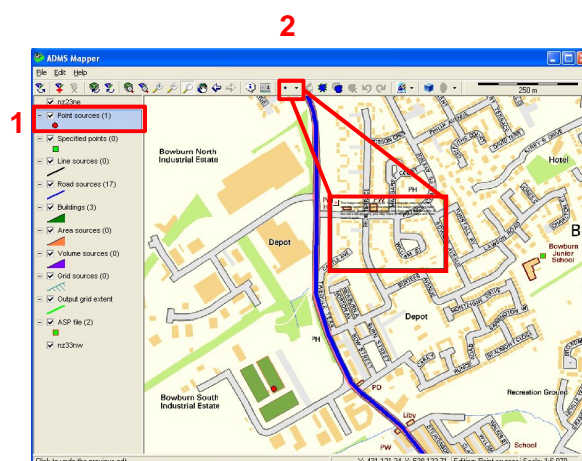
CERC

ADMS-Urban and ADMS-Roads User Group Meeting 2013

Editing model input

Adding sources (1)

- I want to add a source to the Bowburn North Industrial estate
- Add specified points
- Add buildings



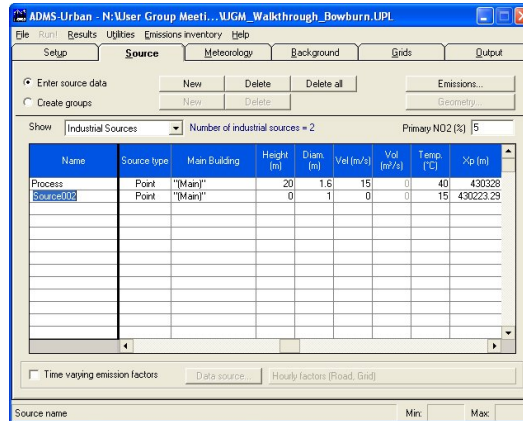
CERC

ADMS-Urban and ADMS-Roads User Group Meeting 2013

Editing model input

Adding sources (2)

- Brings up model interface, with new source selected
- Enter emissions data and other sources parameters in the main model interface



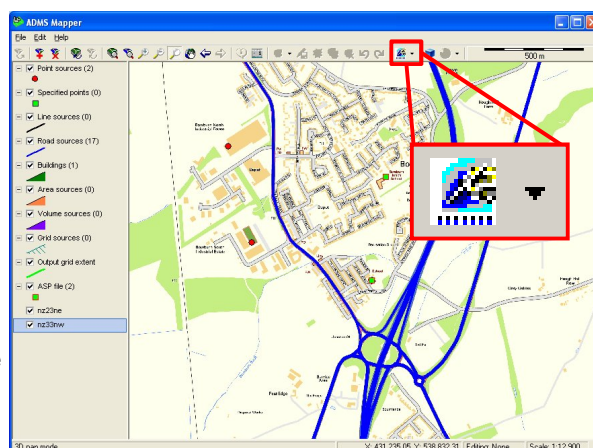
CERC

ADMS-Urban and ADMS-Roads User Group Meeting 2013

Visualising results

Plotting contours (1)

- The ADMS Mapper can plot contours of ADMS-Urban gridded output concentrations
- Three methods
 - In-built interpolator (Kriging or inverse distance weighting)
 - Surfer *
 - ArcGIS Spatial Analyst *



* Requires third-party software

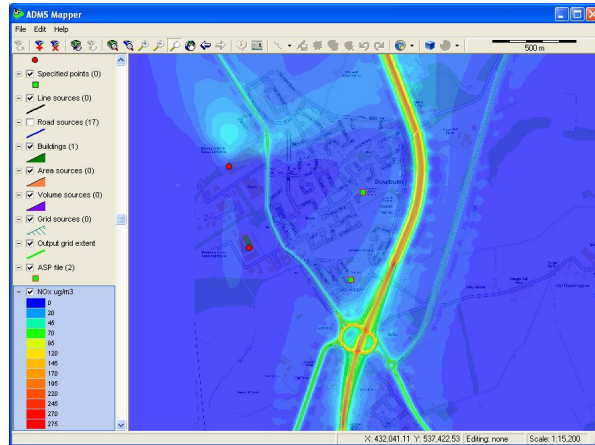
CERC

ADMS-Urban and ADMS-Roads User Group Meeting 2013

Visualising results

Plotting contours (2)

- The ADMS Mapper can plot contours of ADMS-Urban gridded output concentrations
- This plot shows annual average NO_x concentrations, plotted using the in-built interpolator



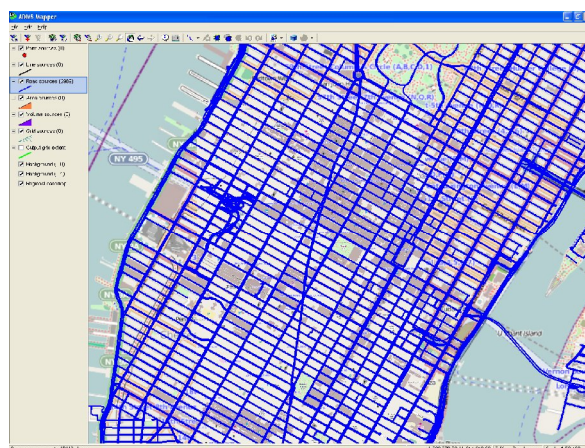
CERC

ADMS-Urban and ADMS-Roads User Group Meeting 2013

Other features

Larger scenarios

- Display as many sources as can be loaded into the model
- This example shows the road network in Manhattan, New York!



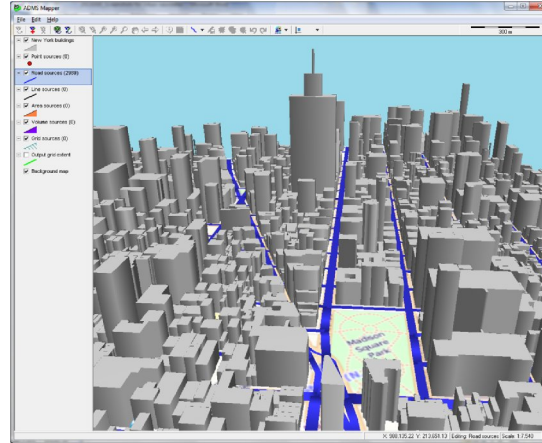
CERC

ADMS-Urban and ADMS-Roads User Group Meeting 2013

Other features

3D Visualisation (1)

- Visualise input in **3D**
- Shapefile of New York buildings loaded
- Helps to identify potentially important street canyons



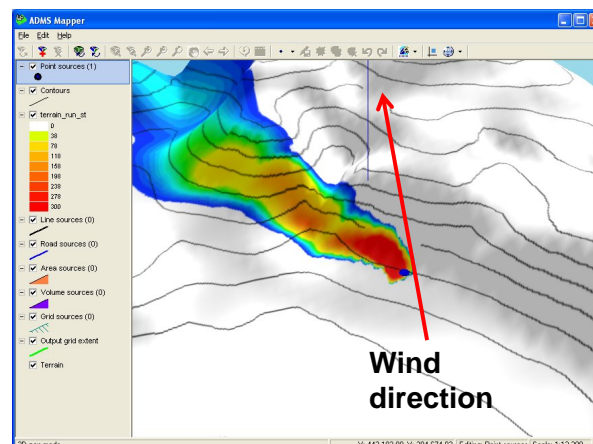
CERC

ADMS-Urban and ADMS-Roads User Group Meeting 2013

Other features

3D Visualisation (2)

- Grid files or rasters can be used as the DEM (Digital Elevation Model)
- Plotting contours over the terrain may highlight the effect of terrain on output concentrations



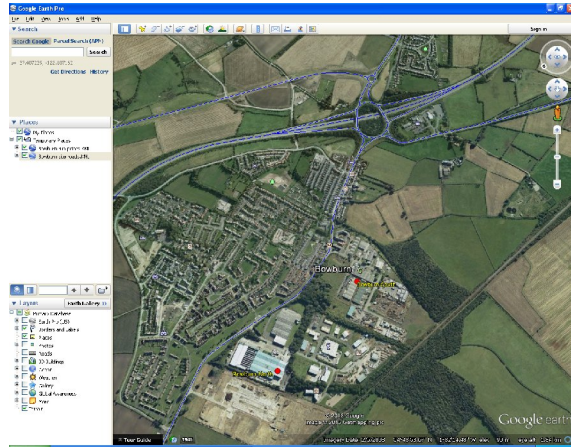
CERC

ADMS-Urban and ADMS-Roads User Group Meeting 2013

Other features

Exporting layers

- Layers, including sources, can be exported
- These use the coordinates system defined in the model interface
- Formats include
 - .shp
 - .mif
 - .kml (Google Earth)



CERC

ADMS-Urban and ADMS-Roads User Group Meeting 2013

Summary

- **Visualising** model inputs
 - Useful while setting up runs
- **Checking** model inputs
- **Editing** existing sources
- **Adding** sources
- **Contour plotting** without third-party software

Please refer to the ADMS Mapper User Guide for more information

CERC

ADMS-Urban and ADMS-Roads User Group Meeting 2013